



## Project Reporting, Controls & Workflow

### Summarised Case Studies

#### Introducing Sabisu

Sabisu is a software platform developed and operated by Argent & Waugh Ltd (A&W), a UK company wholly owned by the founders and funded by customer sales. Most customers and users know the organisation as 'Sabisu'.

The Sabisu/A&W team's understanding of major project processes and reporting requirements has been honed over the last 4 years working on a number of global scale oil & gas capital projects. The team has built significant knowledge through this process and have relevant experience managing projects in regulated environments.

Using innovative software techniques pioneered on massive and complex data structures, the Sabisu platform is designed for distributed data aggregation, calculation and display. Sabisu is used extensively worldwide in the oil & gas and petrochemical sectors for project management reporting and the optimisation of production processes. For many customers Sabisu is their key reporting and collaboration platform.

Sabisu can be delivered according to the Software-as-a-Service (SaaS) model to:

- Eliminate all manual reprocessing of project data
- Simplify the distribution of reports
- Standardise format, approval processes and distribution of reports
- Automate the production of project metrics

The benefits can be significant, including:

- Significant cost & time savings
- Increased visibility of project data in a single location for all users
- Increased trust through improved data quality
- More informed decision making
- Improved analysis and easier investigation of source data
- Rapid report updates and ad hoc analysis
- Flexible and useful visualisations, made available to mobile devices (iPads)

Sabisu has around 6,000 users, distributed globally, managing around \$50bn of major capital projects using the Sabisu platform.

This document contains anonymised details of two typical major capital project implementations; one leading with with reporting and analytics, one leading with workflow & action tracking.



## Case Study 1: Leading with Analytics

Sabisu/A&W was approached to refine reporting for a world-scale gas-to-chemicals project; a green-field US chemicals complex including a 1500 kta ethane cracker with multiple polyethylene units and full logistics, power & utilities along with an entirely new organisation to operate the site.

With an extensive Early Works programme well advanced, the project was at a critical point as it went to FID in terms of project reporting, governance and assurance. A significant increase in activity and data volume was forecast, stressing manual reporting processes and putting data quality under pressure.

The project was facing issues commonly seen on major capital projects, including:

- Creating reports was inefficient, using time better used in
  - analysing the data
  - rectifying issues
- Inconsistencies across the reports as each was standalone, which
  - impacted the quality of decisions made using the data
  - increased the time taken to make the decision as inconsistencies are debated
- Limited data visualisation options meaning decisions were made without full context
- Increasing reporting costs due to duplication of effort and manual reprocessing of data

Sabisu was felt to be the ideal platform to build an Integrated Project Reporting solution, using standard Sabisu functionality to drive better decisions through automation, distribution and collaboration.

Using Sabisu Go, the Sabisu/A&W team were able to construct a proof of concept in a few hours using existing project reports. The owner's team was required only to review.

An implementation in 3 phases was then defined, taking the project to an automated, integrated system;

- Pilot
  - Structure Sabisu reporting to reflect project
  - Prove reporting for Cost, Schedule & Risk
- Executive Team Implementation
  - Extend platform users to include Executive Team and PMO
  - Semi-automate all key reports
  - Capture narrative/commentary
  - Implement drill-downs
- Project Standardisation
  - Extend platform to all users
  - Implement Sabisu Actions for action tracking
  - Configure KPIs, including calculations, RASCI matrices & manual KPIs
  - Automate as far as possible all key reports & data extraction
  - Enable mobile use
  - Integrate Deliverables, C&P, vendor and contractor data



Outline Costs & Resource Requirements

Sabisu licensing costs were costed at £39k/year.

As Sabisu is a multi-tenant cloud environment by default, the customer opted for dedicated single-tenant data-lake storage at an additional cost of £8k/year.

Sabisu/A&W implementation services costs were around £19k.

The customer committed resources mainly from the Project Controls team, with the Project Controls Manager acting as champion and the Project Director as sponsor.

Customer Effort Required		
Task	Users Involved	Total mDays Effort (All Users)
Review initial proof of concept	7	2
Pilot	10	4
Executive Team Implementation	19	8
Project Standardisation	100	14
<b>Total</b>		<b>28</b>



## Case Study 2: Leading with Workflow

Sabisu/A&W was approached to help a joint venture exploiting one of the world's largest gas and condensate fields resolve issues in managing actions and compliance with a view to resolving reporting issues in a later phase.

The joint venture of 5 partners operates a substantial site producing liquid hydrocarbons, gas and fuel gas with a sour gas re-injection plant. In addition a large number of small projects (<\$100m) and major capital projects (>\$100m each) are in progress to modernise the site and optimise production.

This complex operational environment is further complicated by the remote location of the site and resultant shift working patterns, meaning that cross-enterprise workflows are hard to execute, manage and audit.

Reporting challenges were similar to those seen in Case Study 1; inefficiency, inconsistency, limited visibility and increasing costs.

Initially engaging around the action tracking and workflow requirements, Sabisu was rapidly configured to reflect current processes, prioritising those which involved multiple JV partners.

With significant improvements in the response, data quality and completion of actions across the portfolio, specific performance limiting workflows were addressed including resource placement, risk management and change management.

All workflows were configured using Sabisu Flow, Capture and Actions by the project team, with A&W/Sabisu providing support. Subject matter experts within the project continue to maintain these processes.

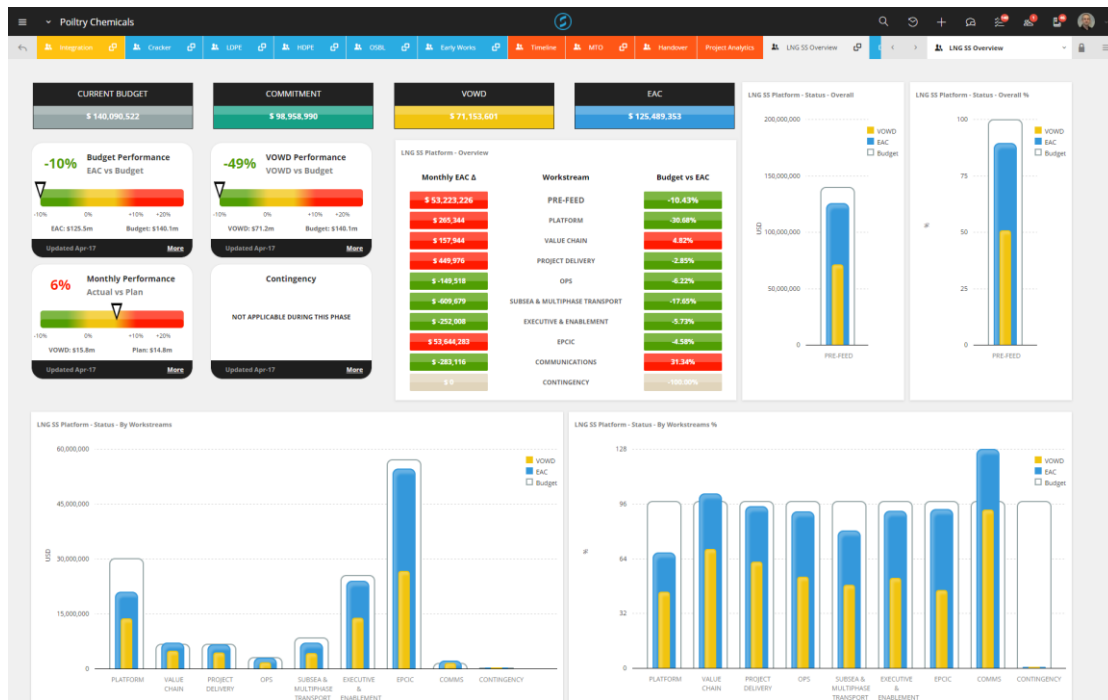
Reporting on workflows was provided using 'off the shelf' Sabisu components with minimum customisation. These reports were handed to the project team for ongoing maintenance and modification.

Sabisu Go was then used to rapidly construct project reports relating to cost, schedule and engineering progress. Following Sabisu best practice these reports were then increasingly automated, reducing Project Controls workload and improving data quality.

Throughout the implementation, narrative and commentary capture was migrated to Sabisu so as to automate the construction of time consuming, complex monthly reports. In fact, something better was achieved; the replacement of periodic reports with a real-time view of project performance which allows incipient issues to be dealt with before they become problematic.

With a portfolio of projects to manage it was also logical to gather key data together into a single view of the portfolio. Lack of capture and reporting standardisation can be problematic in such circumstances, so the processing of different data types and structures into a structured data-lake was important. Harmonising best practices across the portfolio is the next challenge.

Recently Sabisu's analytics have been deployed to provide quantitative risk metrics of Primavera plans. With level 3 and 4 plans that run from 1,000 to 75,000 tasks it can be hard for planners to assess redundancy and connectivity in EPC plans. Sabisu analytics help where simple heuristic analytics cannot.



Outline Costs & Resource Requirements

Sabisu licensing costs were costed at £47k/year.

Sabisu/A&W implementation services costs were around £26k.

The customer committed resources mainly from the Project Controls team, with the Project Controls Manager acting as champion and the Project Director as sponsor.

Customer Effort Required		
Task	Users Involved	Total mDays Effort (All Users)
Action Tracking Specification	4	4
Performance Limiting Workflows	10	12
Reporting, including Action Tracking Reports	33	15
Narrative Capture Training	60	10
Portfolio Reporting	12	9
Plan Analytics	6	6
<b>Total</b>		<b>56</b>